

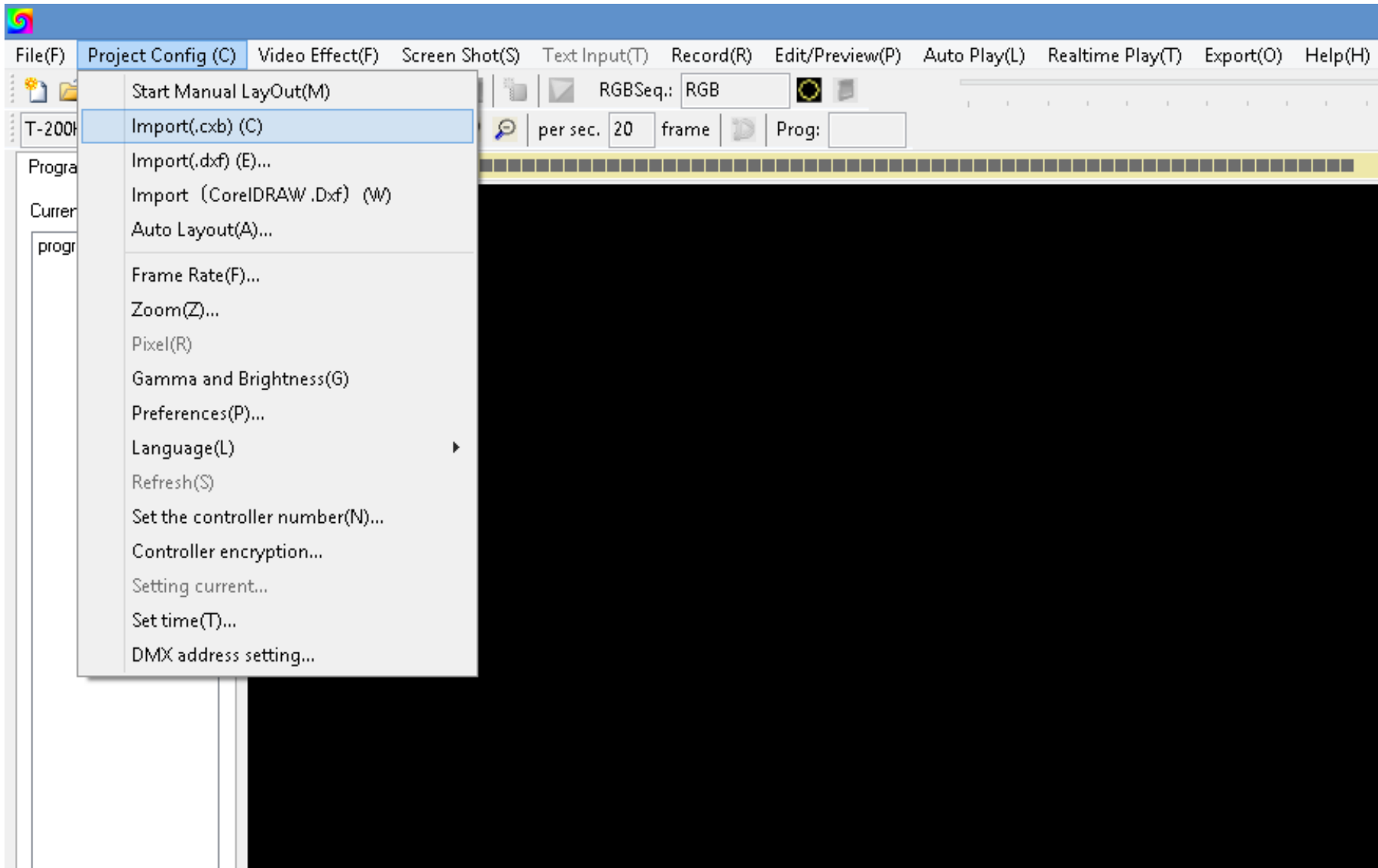
SELECCIONAR CONTROLADOR T-200K –B UCS1903

The screenshot shows the 'LedEdit_T 2014 V2.4' software interface. The main window is dark, and a 'New Project' dialog box is open in the center. The dialog has a blue title bar and contains the following information:

- Select controller...** (button)
- The current controller:** T-200K-B-UCS1903, 1903B, 1909, 1912
- Support chips:** UCS1903, UCS1903B, UCS1909, UCS1912
- Regular use of controller:** T-200K-B-UCS1903, 1903B, 1909, 1912 (list)
- Port Setting:** 512 lights per Port, 1024 lights per Port
- Port number for each Controller:** 8
- Max. of lights for each port:** 512
- Mode:** Slow speed, High speed
- Data adjustment:** Each six-point reverse, Each four-point reverse, Normal mode
- PWM settings:** PWM Anti-polarity, PWM positive polarity
- Frame Rate:** 20 (dropdown)
- Seq. of channel:** RGB (dropdown)
- Save as:** C:\Users\Pavilion 23\Documents\Led1.pxb (text field) with a **Browse...** button
- Buttons:** OK, Cancel

At the bottom left of the main window, there are four buttons: Add, Down, Delete, and Up. The status bar at the bottom left shows '0,0'.

SELECCIONAR CONTROLADOR T-200K –B UCS1903
IMPORTAR ARCHIVO DE CONFIGURACION DE LA BARRA QUE SE ANEXA



EL ARCHIVO SE LLAMA: CABINA 2 DE 1500 PIXELES MONTERREY.CXB

SELECCIONAR CONTROLADOR T-200K –B UCS1903

